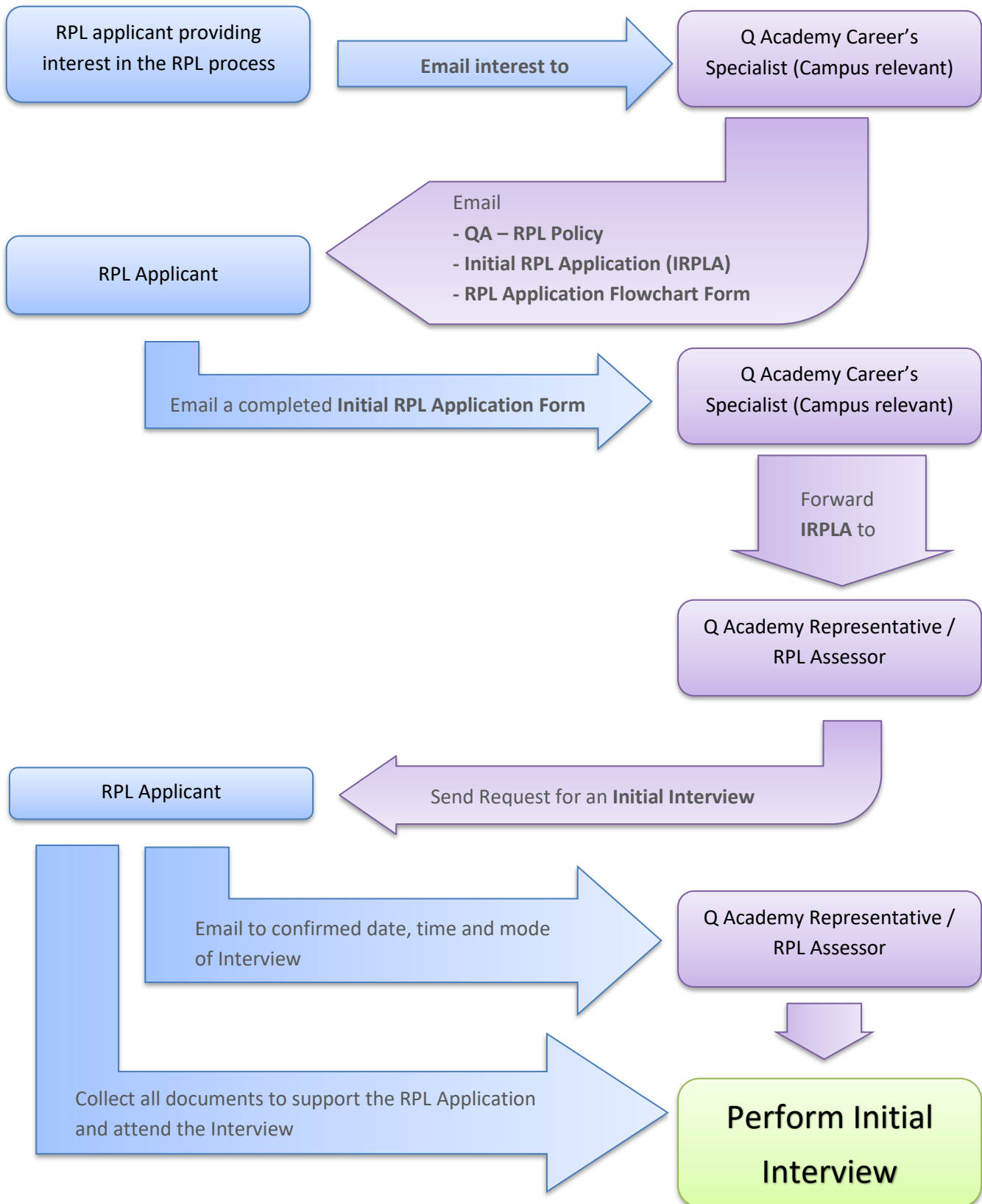
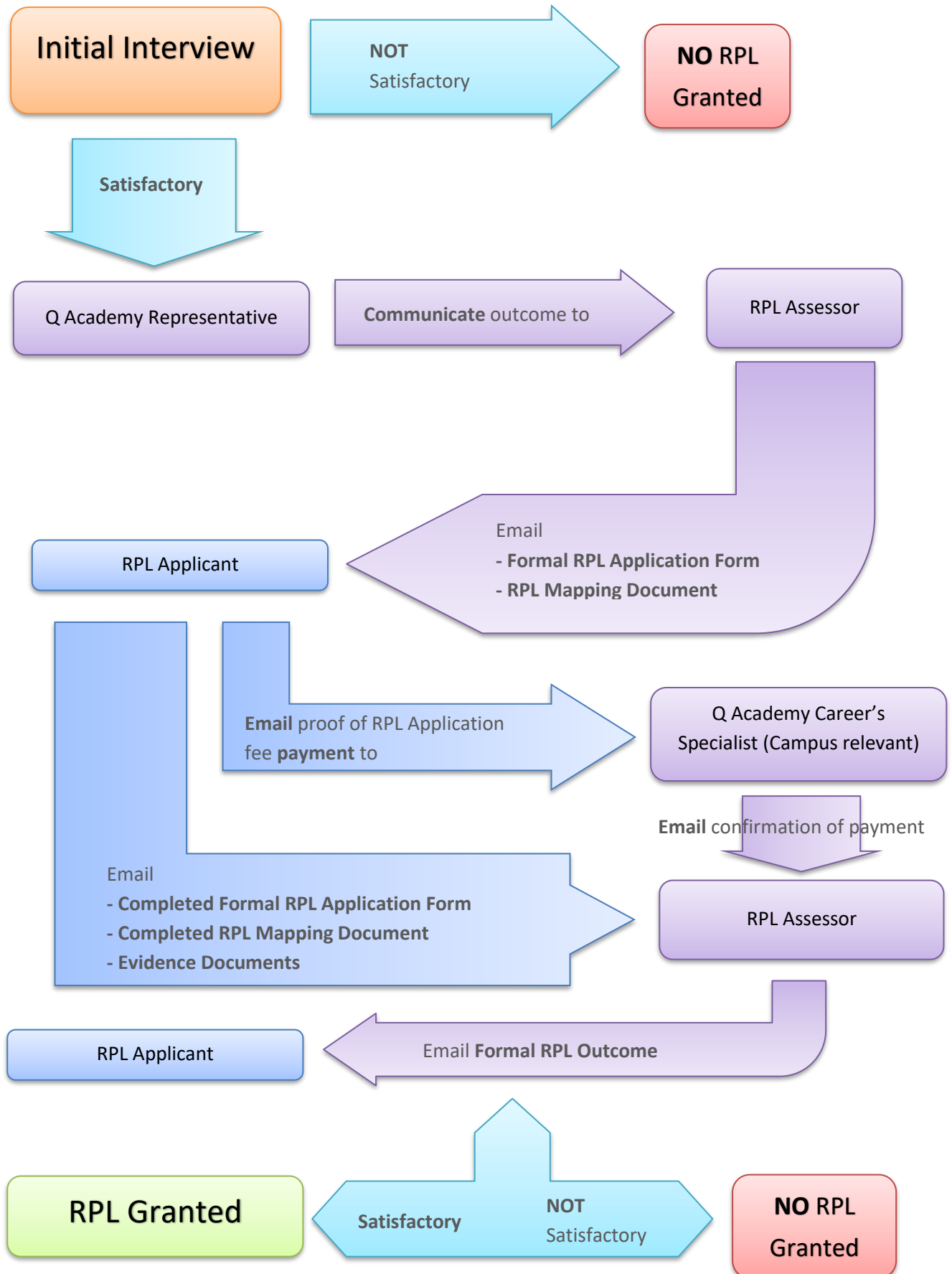


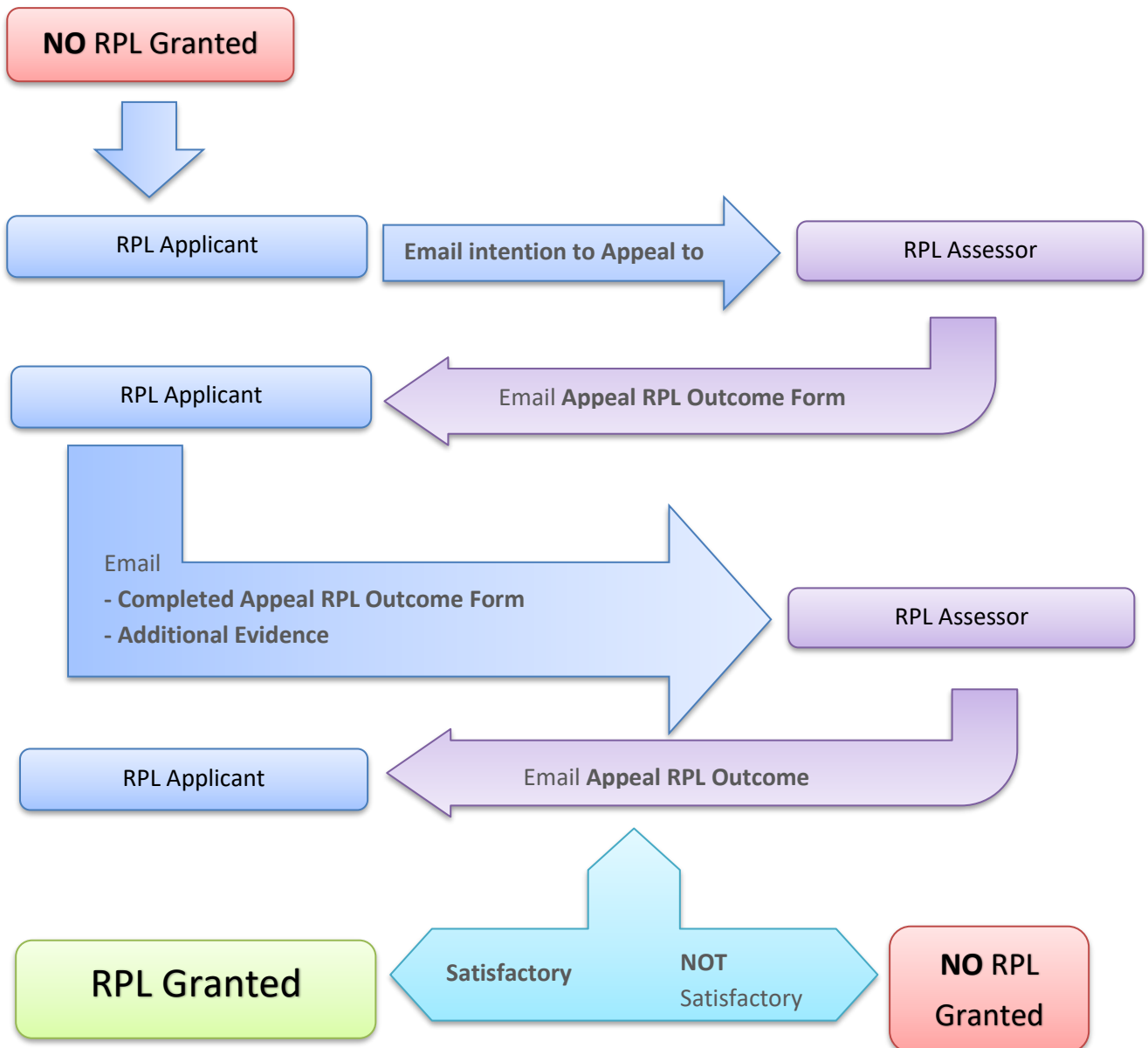
1. Initial Application and Interview request



2. Initial Interview outcome and Formal RPL Application



3. Appeal RPL Outcome Process



4. Further information

Medibank private stipulate their own education criteria that must be met if you want to get a provider number with them.

Q Academy's Diploma of Remedial Massage course meets all of Medibank Privates other listed criteria. This is the one optional area where students could chose to either meet the requirement or not based on if they want a Medibank Private provider number,

Pre RPL skill and Knowledge assessment, unfortunately there is a large variance in the quality and depth of training in courses, not only in Australia but worldwide. This assessment allows us to get a good benchmark for the quality of training undertaken and also allows us assess if skill and knowledge is "current". If someone hasn't used information or an ability in a long time they may no longer possess it. For this reason we may require as part of the Formal RPL application to undertake a skill and knowledge assessment prior to provide a final RPLK outcome.

For qualifications that pre-date national qualifications and overseas qualifications: Units of Competency within the 'training packages' now list very specific criteria. This includes certain assessment requirements and evidence that must be supplied. The most specific and difficult are the requirements within the massage specific units of competency. One of these is that at a certificate IV level the student must've done 80hrs of supervised clinical practice within the school that is supervised by a teacher with an updated TAE qualification.

For people who studied outside of Australia, this requirement cannot have been met.

For students who studied prior to training and assessment qualifications existing, this requirement cannot have been met.

For people who studied in associated fields. The lowest level that RPL can be applied is at a unit of competency. You cannot get RPL for parts of a unit. To get successful RPL you would have to meet all the requirements of the unit including the assessment requirements. This can be quite difficult to achieve. Please come in and talk to us about your experience and we will look into the applicable units and see if there is the ability within the unit to allow RPL.