



COMPLIANT STUDENT CLINIC REQUIREMENTS

FOR HLT42021 CERTIFICATE IV
IN MASSAGE THERAPY &
HLT52021 DIPLOMA OF
REMEDIAL MASSAGE

We understand the student clinic component of the massage course is the hardest to try and fit into your schedule.

The training requirements for nationally recognised courses are set by the Australian Qualification Framework (AQF), and all Registered Training Organisations (RTOs) must meet these requirements and can not be changed.



The student clinic component of the course is designed so that all of our students;

- meet all the AQF training package requirements to be issued with a valid qualification.
- will be accepted by all the major massage industry associations like the Association of Massage Therapists (AMT), Massage and Myotherapy Australia (MMA) and Australian Natural Therapists Association (ANTA).
- will be eligible to apply for and gain a Private Provider Number from the health funds including Medibank, HCF and BUPA.

CLINIC TREATMENT REQUIREMENTS

1) In-clinic supervision by a person who meets the assessor requirements outlined below for 80 hours of client consultation work for the HLT42021 Certificate IV in Massage Therapy or 200 hours for the HLT52021 Diploma of Remedial Massage

2) Assessors must satisfy the Standards for Registered Training mandatory competency requirements for assessors:-

a. vocational competencies and current industry skills relevant to the assessment being validated (Diploma of Remedial Massage or higher)

b. TAE40110 Certificate IV in Training and Assessment.

As listed on the ASQA website

THIRD PARTY CLINIC OPTIONS

If you find a third party professional clinic near you that satisfies the criteria listed below, we would be more than happy to discuss the options for our students to complete their clinic hours in that location.

Third party clinics or practitioners must have;

- equivalent industry qualification (HLT52015/HLT52021 Diploma of Remedial Massage)

Someone with the Certificate IV in Massage Therapy can not supervise someone studying the Diploma of Remedial massage.

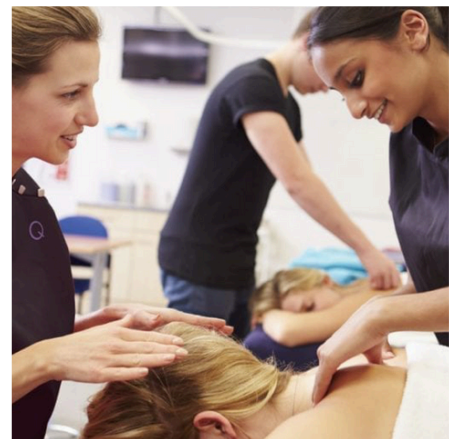
Someone with an outdated qualification, such as the HLT50307 Diploma of Remedial Massage can not supervise someone studying the HLT52021/HLT52015 qualification.

- a TAE40110 Certificate IV in Training & Assessment qualification or higher.
- that can be onsite for the 80 (CIV) or 200 (DIP) hours to provide face-to-face supervision and assessment of your treatments.

KNOWING THE DIFFERENCE

It is generally easy to find a clinic that has therapists with the industry qualification willing to supervise your clinic hours. It is not easy to find a therapist to supervise you that also has the qualification to assess your treatments.

Finding someone with a TAE to assess your logbook hours remotely and not face-to-face is not compliant. Your clinical module could be deemed non-compliant, requiring you to complete them again under the correct supervision.



WHAT TO TAKE AWAY FROM THIS INFORMATION

- If any clinic could supervise a student without the need of a therapist that meets the listed requirements present to supervise and assess, then we would have provided this as an option.
- You should always check with a major massage association (such as AMT, MMA or ANTA) if the school you are looking to study with is providing recognised study and meets the requirements to get your health fund provider number.
- Make your clinic hours count! Ensure they are done properly under correct supervision so you can graduate with the Australian, nationally accredited course and meet the requirements to get your health fund provider number. Or you run the risk of needing to complete your clinic hours again under the correct requirements.



NETQ STUDENT CLINICS

You will find that our on-campus student clinics are the perfect mix of real-world experience combined with expert supervision by trainers who are familiar with the industry expectations and standards.

Whilst we understand that this is the trickiest part of the program for our online students to schedule it is also the most valuable, providing the option for face-to-face treatment practice and support. With clinics located in Brisbane, Gold Coast, Sunshine Coast, Sydney and Cairns, hopefully we can find a location that works for you.

We are as flexible as we can be with scheduling, however the two things we cannot change are the number of hours students need to complete (200 for Diploma or 80 for Certificate IV) and the clinic supervision requirements as specified by the governments training package requirements (see ASQA website).

To sign you off for the practical units of competency you must demonstrate your skills under face-to-face supervision, in the clinic by a qualified therapist who meets the trainer and assessor requirements.

You should not be asked to find your own clinic supervisor but if you do have a possible third party candidate clinic then we would be happy to advise and assist them becoming your clinic supervisor and assessor.

Should you find a suitable clinic that meets all the government requirements (as above), please advise us who to contact and we can provide them with the "Third Party Clinic Information Kit".

HELPFUL CONTACTS

Massage & Myotherapy Australia (MMA)

03 9602 7300

info@massagemyotherapy.com.au

www.massagemyotherapy.com.au

Australian Natural Therapists Association (ANTA)

1800 817 577

info@anta.com.au

www.australiannaturaltherapistsassociation.com.au

Association of Massage Therapists (AMT)

02 9211 2441

info@amt.org.au

www.amt.org.au

Australian Skills Quality Authority (ASQA)

1300 701 801

www.asqa.gov.au/

FREQUENTLY ASKED QUESTIONS

Why can't I do my clinic hours with my local Remedial Therapist/Myotherapist/Physio/Chiro?

Whilst your local massage professional may be an excellent therapist, it is unlikely they are qualified to assess your completion of this extremely important part of your qualification.

What is a suitably qualified person?

To be deemed suitable to assess your clinic hours your supervisor must:

- have current clinical experience and a current Australian qualification as a remedial massage therapist, myotherapist or soft tissue therapist providing services to the general public.
- hold current practising membership of a relevant Australian professional body that represents remedial massage therapists, myotherapists, or soft tissue therapists.
- hold a Certificate IV in Training and Assessment (TAE40110 or TAE40116), or a diploma or higher level qualification in adult education.

What are private provider numbers?

Private Provider Numbers (PPN) are issued by private health insurance companies to various allied health professionals who hold the required qualifications and have met appropriate study conditions. Once you have your PPN your clients can receive a rebate from their private health insurance company for your treatments.

What role do Association's play?

Massage Associations are professional registering bodies who advocate for their members and the industry. They are the conduit between therapists and health insurance companies. Once you have graduated and joined an association your association will assist you to register with the health funds for you provider number.

How do I spot a reputable association?

Q Academy recommends and is affiliated with Association of Massage Therapists (AMT), Massage and Myotherapy Australia (MMA) and Australian Natural Therapists Association (ANTA).

These associations require a nationally recognised qualification to join, they have good links with health funds, they do not charge training providers to become an approved provider and they are rigorous in their assessment of training and assessments carried out by the RTO's

Where are your student clinics?

We have clinics in Cairns, Sunshine Coast, Brisbane, Gold Coast and Sydney.

We also try to be as flexible as possible with the clinic scheduling to try and fit in with any work/family/travel restrictions you may have.

How many supervised clinical hours do I have to do?

HLT42015/42021 Certificate IV in Massage Therapy = 80 hours of onsite clinic (80 relaxation)

HLT52015/52021 Diploma of Remedial Massage = 200 of onsite clinic (80 relaxation and 120 remedial)

KNOWING WHEN A COURSE IS NOT COMPLIANT

- When the course is marketed by a school that is not a RTO, but the course content is delivered by a third party RTO with the clinic module delegated to another clinic that you need to organise. Each party can then claim they are not responsible for any promises regarding compliance made by others.
- if an RTO says their course is recognised by the International Institute for Complimentary Therapies (IICT) association. This association is not recognised by Australian health funds.
- If the RTO can not guarantee their course will be recognised by the major health funds.
- If the 200 hours of supervised clinic hours are outsourced to a third party without specifying the AQF requirements.
- If the RTO can not answer your questions in detail but rely on their legally curated FAQ's.
- If the cost and effort required seem too good to be true.